

Delivery Programme

Opportunities to get involved

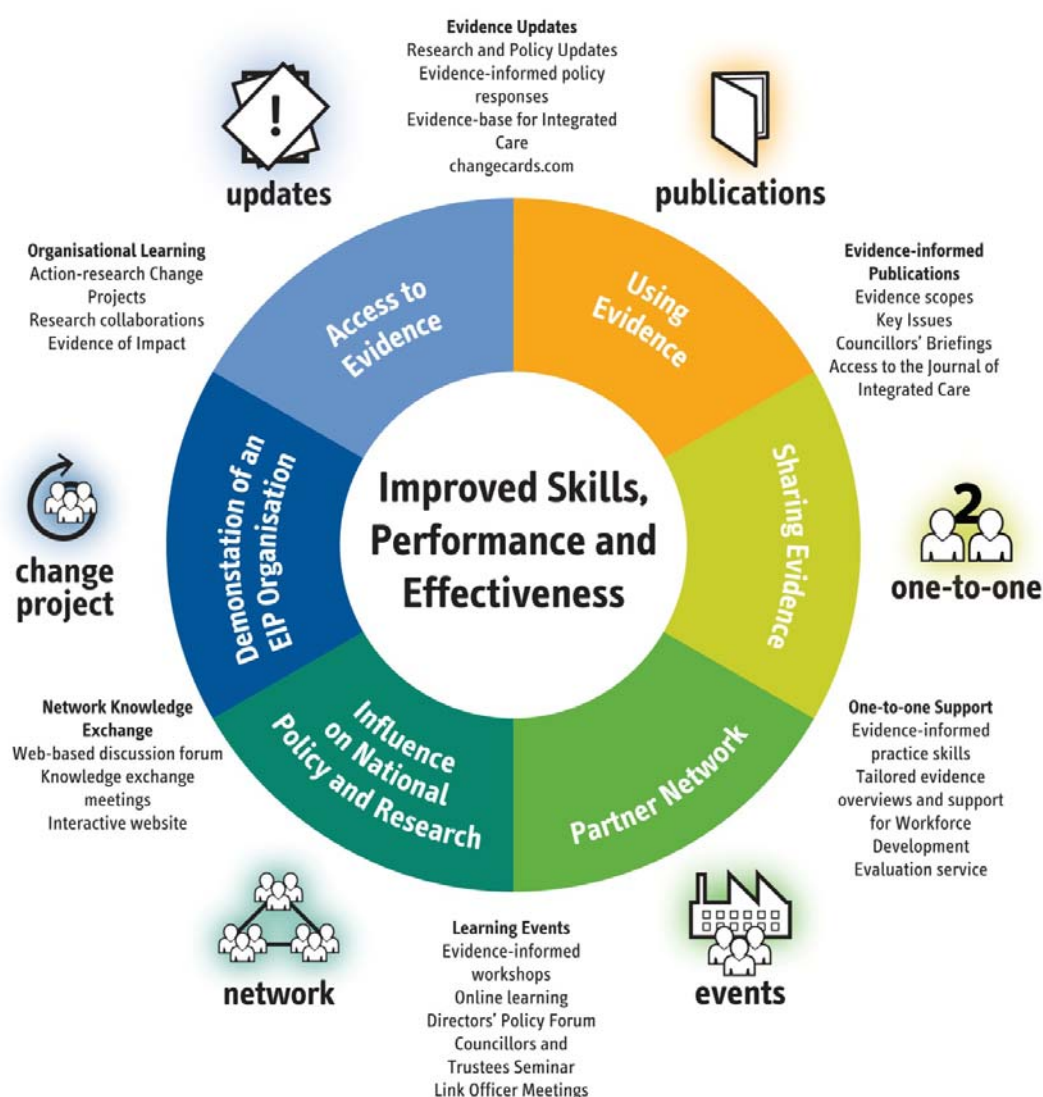
ripfa promotes and supports evidence-informed practice in adult social care and health.

What is evidence-informed practice (EIP)?

Evidence-informed practice means continuously asking questions about what works, searching objectively for the best available evidence, and taking appropriate action guided by that evidence.

Evidence-informed practice increases practitioner skills, raises organisational performance and ensures good decision-making in order to improve the experience and outcomes of service users and carers.

ripfa uses evidence-informed approaches to support our Partners in the following ways:



We have developed our evidence-informed programme in consultation with Link Officers and Directors from across our network. To support Partners with the implementation of priority policy areas, we are linking our delivery to the seven Principles of the Government's *Vision for Adult Social Care*. These strongly reflect our priorities for last year; see our Impact Report 2010-11 available at www.ripfa.co.uk

Protection

There are sensible safeguards against the risk of abuse or neglect. Risk is no longer an excuse to limit people's freedom.

We will provide the latest practice evidence to support risk management and positive risk enablement.

Interactive website: Balancing personalisation with safeguarding

Adult social care must both maximise choice and control and prevent abuse and harm. Through Knowledge Exchanges earlier this year we gathered expertise and experience on the implications of balancing personalisation with safeguarding vulnerable adults. This learning is presented on our interactive web-pages to promote understanding and to allow reflection, ongoing discussion and peer support. We will continue to add relevant information to this site at www.ripfa.co.uk/balancing-personalisation-with-safeguarding
Ongoing

Web-casts: Balancing personalisation and risk

We will continue to gather insights from experts by experience for our series of web-casts to share evidence and views and to stimulate discussion. You can access these on the interactive site www.ripfa.co.uk
September – October Remote access

We will provide the latest research and practice evidence to support the development of effective safeguarding practice.

Update of *Safety Matters*: Developing practice in safeguarding adults

The resources from our first Change Project *Safety Matters* that focused on safeguarding and adult protection have been well received since they were launched in 2009. We will be updating our resources in line with recent policy and research developments and are looking to identify customers to support us in developing additional resources and to share their experiences. Please contact us if you would like to be involved.
Ongoing

Webinar: Responses to National Competence Framework for Safeguarding Adults

This online event will present an evidence-informed approach that we have taken to support **research in practice *for adults*** agencies to use this framework in order to ensure competence and consistency in safeguarding. We will provide an overview of the evidence around raising standards in safeguarding and share learning from this approach with the network. There will be opportunities for question and discussion.
December 16 2pm Remote access

Webinar: Person-centred safeguarding

This online event will present an overview of person-centred safeguarding. Participants will hear about the barriers and enablers to taking a person-centred approach and will have the opportunity to share their experiences with colleagues from across the **research in practice *for adults*** network.
March 8 10am Remote access

Personalisation

Individuals not institutions take control of their care.

We will provide support to practitioners, managers and leaders to take action to implement self-directed support successfully.

Change Cards: Support for culture change

There is a continued focus on increasing choice and control involving ambitious targets and large-scale change. www.changecards.org will continue to provide the latest evidence, practice examples and ideas for how the change to self-directed support can be successful. We will support Partners to share stories of successful change.

We are providing tailored workshops to support cultural change using Change Cards. These will incorporate activities to benchmark how far self-directed support is already embedded, and to action plan your next steps.

The first workshop will focus on *implementing self-directed support in mental health* and is for practitioners, managers and providers from adult social care and health.

The second workshop will focus on *keeping the momentum going* in services where self-directed support has been in place for a period, and is for practitioners and managers who are acting as champions to make the change to self-directed support successful.

September 21 Cumbria *Implementing self-directed support in mental health*

October 19 Ealing. *Keeping momentum for change going*

We are developing a web-based module on successful change to self-directed support for individual and group learning. Please contact us if you would like to be involved in this work or plan to include Change Cards in your own web-based learning.

Ongoing

Plurality

The variety of people's needs is matched by diverse service provision.

We will share what works to support User-led Organisations (ULOs) in order to increase market diversity.

Interactive website: User-Led Organisations

ULOs have been identified as central to developing capacity. Building on *Key Issue 5* on the role of ULOs, we will continue to disseminate the main messages from evidence and practice about how they can be supported to contribute to growing the social care market. To find out more visit www.ripfa.co.uk/user-led-organisations

Ongoing

Webinar: Update on User-Led Organisations

Facilitated by Rich Watts, National Lead of the Office for Disability Issues, Strengthening Disabled People's User-Led Organisations Programme. This event will share information about current practice around ULOs and include the opportunity for you to pose questions to Rich and to share your expertise with others from across the network.

November 21 2pm Remote access

Partnership

Care and support delivered in a partnership between individuals, communities, the voluntary and private sectors, the NHS and councils.

We will produce practical resources on what works to improve the experience of carers.

Change Project: Working Together

This Change Project brings together evidence and expertise from carers, practitioners and the voluntary sector to understand how individuals and organisations can work together effectively to improve the experience and outcomes of carers. To find out more visit www.ripfa.co.uk/working-together

Working Together: Launch of Interim Findings

The interim findings from *Working Together* will be presented at a national event. We will share the main messages on how to improve carers' experience and outcomes and explore disseminating these findings more widely in ways that are truly accessible and have impact. This event is for carers' leads, champions and commissioners with your third-sector partners.

September 15 Birmingham

We have learned that, despite limited resources and increasing demands on services, there are things that individuals can do to improve relationships so that the human element of working together, the warmth and recognition that carers value, is not lost in the process. The Interim Report is available at www.ripfa.org.uk

Working Together: Piloting of resources

We will be developing resources to share messages from the *Working Together* Change Project between September and February. We will test and develop these across the country with social care, the voluntary sector and with carers. We welcome contact from partners, carers, carers groups or support organisations, and others who would like to pilot and provide feedback on these resources. Please contact us to get involved.

February onwards by request

Productivity

Greater local accountability will drive improvements and innovation to deliver higher productivity and high quality care and support services.

We will provide the latest evidence, experience and examples on restructuring to support transparent, defensible decision-making.

Strategic Briefing: Evidence-informed restructuring

Local Authorities have to make difficult decisions about how to structure services in order to get the best value from the resources that they have. Through our recent Knowledge Exchanges we have gathered expertise and experience on the principles and practice of restructuring, commissioning and de-commissioning services. As part of a new series of Strategic Briefings, we will present evidence-informed principles to support transparent, defensible decision-making.

October

We will provide support to develop capacity for evaluation and to share knowledge across the sector in order to demonstrate value and learn from what works well.

Research, Evaluation, Analysis and Support Network: reason

Local Authorities are increasingly required to demonstrate the value of what they do. In partnership with **research in practice** and **NFER** our new research, evaluation and analysis support network, **reason**, will be launched to Partners. Our **reason** website will provide access to dedicated resources to build capacity to carry out, use and embed evaluations; a network to share learning from practice; and signposting to relevant examples and information.

We are already providing bespoke support to Partners to conduct and apply effective evaluations in order to improve their performance, efficiency and the quality of what they deliver. To access extra support or to discuss using your one-to-one hours for evaluation support, contact ask@reason-network.org.uk

October onwards

Prevention

Empowered people and strong communities will work together to maintain independence.

We will provide evidence on what works in reablement to reduce the need for long-term support.

Telephone Knowledge Exchange: Reablement

Following on from our successful knowledge exchange in July 2011, this structured meeting will allow Partners to continue the discussion of the evidence around what works in reablement and to share their expertise and practice knowledge. This event is aimed at those with lead responsibility for implementing reablement. **research in practice for adults** will then disseminate evidence, practice and examples across the network. Please contact us to get involved.

September – March by request [Remote access](#)

We will develop a series of guides for customers to explain aspects of social care and how these can support people to improve their independence and quality of life.

Customer guides: What is adult social care? What is self-directed support?

There is a growing emphasis on ensuring good universal information and advice. However, evidence shows that many people have limited knowledge of what social care is and what it does. Our first two guides for customers focus on social care and self-directed support. They introduce the evidence of what they can offer, what to expect from them, and how to know if you've had a good experience, together with advice from service users and carers about how to make the most of them.

October

Customer guide: What is reablement?

The third in our series of guides for customers will introduce the evidence around what reablement is and how it works in order to support customers to know what to expect and to make the most of this valuable service.

February

People

We can draw on a workforce who can provide care and support with skill, compassion and imagination, and who are given the freedom and support to do so.

We will pilot an evidence-based approach to using analysis and critical reflection in casework to support professional practice and defensible decision making.

Change Project: Analysis and critical reflection in adult social care

There is a growing emphasis on professional judgement and decision making. Analysis and critical reflection underpin how practitioners use information to determine the best actions in order to meet the outcomes service users and carers need. We will use workshops to bring research and practice together to develop an understanding of the learning and resources that will support practice in this important area.

Workshops: Analysis and critical reflection in adult social care

Co-facilitated by a former senior Police Officer, these one-day workshops explore the evidence and practice around using analysis and critical reflection to make decisions. They present the practice and policy context that determine the need for good analysis and critical reflection, share learning about how they support professional judgement and good decision-making, and use examples to illustrate how this works in practice. The workshops introduce an evidence-informed approach to using analysis in case-work and allow participants to work through specific cases to understand how this supports them to determine eligibility, manage risk and meet outcomes.

September 22 Birmingham
January 17 Salford

November 2 Luton
March 13 Bristol

We will support key groups to embed evidence-informed practice in their organisations and to identify the benefits of this.

Telephone meeting: Professional Lead Network

One of our strengths in embedding evidence-informed practice is our network. Networks bring people together around a shared goal, identify activities and tools to meet this goal, and provide peer support to achieve the benefits linked to this goal.

An emerging role in adult social care, identified as key by the College of Social Work, is the professional lead. These are people who are tasked with ensuring that professional development, professional practice and professional judgement are embedded in their organisation. Evidence-informed practice provides a foundation for identifying professional development aims, and effective practice and enablers to support these.

This telephone meeting will provide an initial forum for professional leads, senior practitioners, workforce development leads and other pivotal individuals to discuss how they can use evidence to lead professional practice in their organisations, and to share learning and to build capacity for this task.

November 8 2pm [Remote access](#)

Telephone meeting: Link Officer Network

Link Officers play a pivotal role in embedding evidence-informed practice. This telephone meeting will focus on how our network can enable them to do this, and how they can develop networks in their own organisations to provide support and recognition for this work.

New date due to strike action. Now November 29 2pm [Remote access](#)

We will support managers and practitioners to access the support they need through evidence-informed supervision.

Joint workshops: Delivering Supervision Under Pressure

When supervision contains opportunities for critical reflection and to support professional development then it contributes directly to competent, confident practice that supports the experience and outcomes of service users and carers. However, in practice delivering supervision is under pressure from time, resource and system constraints.

These workshops with **research in practice** examine the evidence-base for effective supervision, explore the barriers to doing this, and identify the enablers and alternatives to ensure that the needs of supervisees and supervisors are met. They are for operational managers, practitioners and senior managers who wish to explore practical evidence-informed ways of gaining the time and space necessary to develop robust, effective practice.

December 6 Surrey

February 28 Bristol

January 25 Leicester

March 29 Salford

We will support you to make progress on a priority topic or skill using evidence and evidence-informed approaches.

One-to-one: Tailored support for your priority

Each **research in practice for adults** Partner is entitled to up to 20 hours of one-to-one support each year. This supports Partners to embed evidence-informed practice and to build capacity around a particular topic or skill. We use a range of methods including workshops, evidence overviews and knowledge exchanges. Key learning from these projects is shared with the network.

We have recently delivered tailored support around priority topics including managing change, using evidence in professional development, and evidence-informed decision-making. We have provided support for groups including newly qualified social workers, first-line managers, champions and senior managers.

Ongoing by request

How to get involved

To find out more about any of these activities or resources, discuss your one-to-one support, or give us your views or questions on our work, contact us at help@ripfa.org.uk or on 01803 869753

To book a place at an event including webinars, contact us at events@ripfa.org.uk

For ideas on how to use your tailored hours of one-to-one support please visit www.ripfa.org.uk/onetoone

To share your experience of evidence-informed practice or feedback on any of our services, visit www.ripfa.co.uk, email us at help@ripfa.org.uk or tweet us [@ripfa](https://twitter.com/ripfa)